



**Louviers Water and Sanitation District**  
<https://louvierswsd.colorado.gov/>

## **Emergency Response Plan**

### **Includes:**

- System and Emergency Contact Information
  - Notification Lists
  - Critical Infrastructure
  - Chain of Command
  - Public Communication and Media Notification
  - General Emergency Response Procedures, Sampling and Safety Precautions
- 
- Appendix A - Press Release Template
  - Appendix B - Sample Collection
  - Appendix C - Public Notification Examples
  - Appendix D - Additional Resources

Revised: October 18, 2021

## **System and Emergency Contact Information**

### **Water System Information:**

Water System Name: Louviers Water and Sanitation District

Water System ID: CO0118035

County Served: Douglas

Population: 269

### **Sewer System Information:**

Wastewater System Name: Louviers Wastewater Treatment Plant

NPDES Permit: COX632004

County Served: Douglas

### **Primary Emergency Contact:**

Contact Name: Will Parker

Daytime Phone: 303-681-2253

Emergency Phone: 303-901-2178

Cell Phone:

Emergency E-mail: willsemocor@hotmail.com

### **Secondary Emergency Contact:**

Contact Name: Semocor Inc.

Daytime Phone: **Please see contact list**

Emergency Phone: **Please see contact list**

### **Backup Emergency Contact:**

Contact Name: Matt Collitt

Emergency E-mail: mcollitt@louvierswsd.org

### **Local Emergency Planning Committee:**

Douglas County Sheriff's Department

4000 Justice Way

Castle Rock, Colorado 80109

303-660-7505

dcsheriff.net

## Notification Lists:

### Local:

Description	Name	Phone	E-mail
Emergency Planning Committee	Douglas County Sheriff's Department	303-660-7505	

### Media:

Description	Name	Phone	E-mail
System Spokesperson	Matt Collitt President, Board of Directors	N/A	mcollitt@louvierswsd.org

### Notification:

Description	Name	Phone	E-mail
Fire Department	South Metro Fire Rescue Authority	911	
Sheriff's Department	Douglas County Sheriff	911	
Emergency Medical Services	South Metro Fire Rescue Authority	911	
Local Health Department	Tri County Health	303-220-9200	
State Spill Hot Line	CDPH&E	877-518-5608	
Operator Responsible Charge	Will Parker	303-901-2178	Willsemocor@hotmail.com

**District:**

Description	Name	Phone	E-mail
President, Board of Directors	Matt Collitt	N/A	mcollitt@louvierswsd.org
District Manager	Sarah Shepherd, Circuit Rider of Colorado	303-482-1002	info@ccrider.us sees@ccrider.us

**State and Federal:**

Description	Name	Phone	E-mail
Drinking Water Primary Agency	CDPH&E	303-692-3500	
Department of Health	CDPH&E	800-886-5608	
Department of Environmental Protection	EPA	800-426-4791	

**Service:**

Description	Name	Phone	E-mail
Electrician	Justin Merritt	303-9290091	
Electrician	Pete Dunbar	303-638-6762	
Electric Utility Company	IREA	303-688-3100	
Gas Utility Company	XCEL	800-895-2999	
Soil Excavator / Backhoe	Fischer int.	303-688-1710	
Soil Excavator / Backhoe	EPR	303-791-2521	
Utility Locates	UNCC	811	
Pumps	Randy parsons	303-857-7540 303-598-9701	

Wells	Scott Orr-Hydro	303-857-7540 303-598-9693	<a href="mailto:sorr@hydroresources.com">sorr@hydroresources.com</a>
SCADA	Randy Lindenberger- Hydro	303-598-1600	
Sewer CleaningNideo	Patrick Carroll - DRC	720-225-8347 303-688-2166	

**Critical Infrastructure:**

<b>Description</b>	<b>Location</b>
Louviers Water Treatment Plant - North Site	7938 Louviers Boulevard
Louviers Water Treatment Plant - South Site	7490 Louviers Boulevard
Louviers Wastewater Treatment Plant	7249 Main Street

## Chain of Command

Internal Chain of command should be notified in **ALL emergencies**.

External Chain of Command should be notified in the case of the following types of emergency: chemical, fire, weather related, etc.

### External Chain of Command:

**The external Chain of Command** is for the emergency response leader to notify the first responders, as well as the critical customers who may be impacted from disruption and/or corruption of service.

It will also be used to establish a command and reporting structure during the emergency.

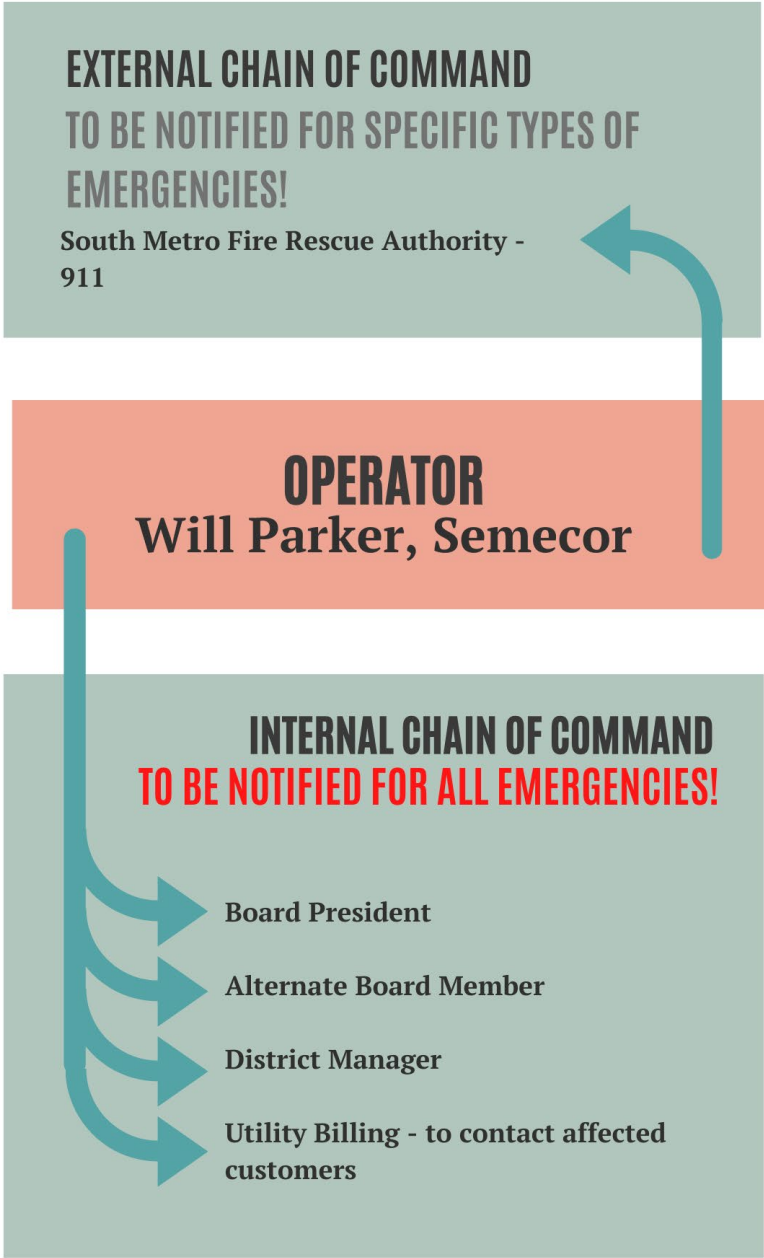
Description	Name	Phone	E-mail
Fire Department	South Metro Fire Rescue Authority	911	

### Internal Chain of Command:

**The internal Chain of Command** is used to help contractors, employees, and local officials understand who to report to and take directives from.

Description	Name	Phone	E-mail
Operator	Will Parker, Semocor Inc.	303-901- 2178	willsemocor@hotmail.com
Board President	Matt Collitt	NA	mcollitt@louvierswsd.org
Alt Board Member	Jake Kennedy	NA	jkennedy@louvierswsd.org
District Manager	Circuit Rider of Colorado	303-482- 1002	info@cridder.us
Utility Billing	Neil Schilling	N/A	Neilschilling@schilliingcpas.com

# CHAIN OF COMMAND



## **Public Communication and Media Notification**

Designated Public and Media Spokesperson:  
Matt Collitt, President of the Board, in coordination with District Management.

The system's designated Public and Media spokesperson will determine the outreach method to inform the media and general public about any emergency procedures that may be needed (i.e. 'Boil Water', 'Do Not Drink', 'Do Not Use').

Communication methods include but are not limited to: update voice message, contact customers directly via telephone, contact customers directly via flyer, provide information at the Louviers Post Office, provide information on the District's website <https://louvierswsd.colorado.gov/> and place informational signs at strategic locations applicable to the incident.



## **General Emergency Response Procedures, Sampling and Safety Precautions**

### **Incident Command Center**

All emergency response personnel will report to the Louviers Post Office. This is where the Incident Command Center will be located, and emergency response activities will be coordinated.

### **Access Control**

Access to the utility will be limited to authorized personnel. The decision to lock down the facility will be determined on a case-by-case basis by Will Parker.

### **Site Specific Procedures and MSDS**

Safety precautions that need to be taken while handling chemicals are contained in the material safety data sheets (MSDS) and are located at each site.

### **Sample Collection and Analysis Procedures**

Depending on the type of suspected contaminant, the guide, summarized in Appendix B will be used as a general guideline to assess the quantity of sample to collect, the sample container, and to identify laboratories with the capability to analyze for a particular contaminant.



**SEMOCOR INC.**  
Water Management & Operations  
3995 S. Castlewood Canyon Rd.  
Castle rock, CO 80104  
Phone: 303-681-2253  
Semocor.com  
E-mail: [Willsemocor@hotmail.com](mailto:Willsemocor@hotmail.com)

## **Semocor Inc. Contact List**

**Semocor Inc. Office**

**(303) 681-2253**

Please call the office first, if there is an emergency and no one is available then start calling the following cell phone numbers. Then move on to the home numbers please.

	Cell	Home
Will S. Parker (Owner/President)	(303) 901-2178	
Sara Parker (Owner/Operator)	(303) 523-0722	
Clyde E. Parker (Operator)	(303) 901-2178	
Mark Dufrenne (Operator)	(303) 319-6244	
Scott E. Monroe (Operator)	(303) 901-0804	
Ryker Cook (Operator)	(720) 376-5595	
Martin Steab (Operator)	(720) 917-9899	
Terry C. Brownell (Operator)	(303) 419-4409	